

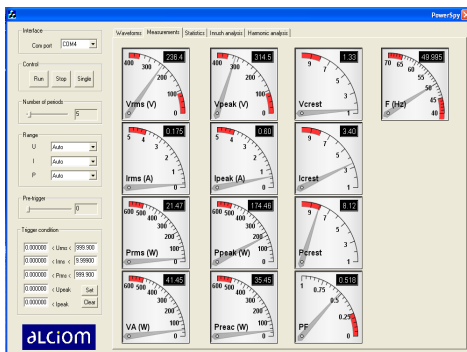
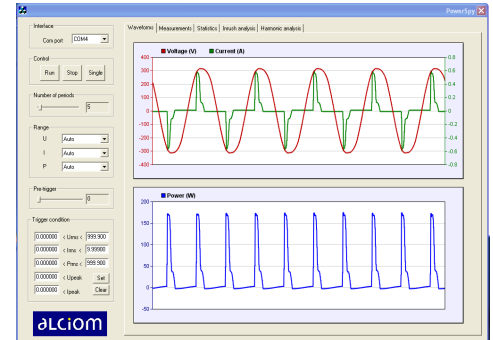


# powerSpy

## The advanced energy analyzer

### Flexible !

- A real **oscilloscope** : voltage, current and power real time display
- **Automatic calculation** of all derivated values : RMS voltage, current and power, peak-to-peak, apparent and reactive power, power factor, frequency, harmonic distortion
- **Advanced triggering** and display of the RMS values for every period of an acquisition
- Complete **statistics**, automatic integration for **energy accumulation** over time, XY plot
- **Harmonic analysis** and automatic comparison with IEC 61000-3-2 edit 2.2 Classes A,B,C and D limits

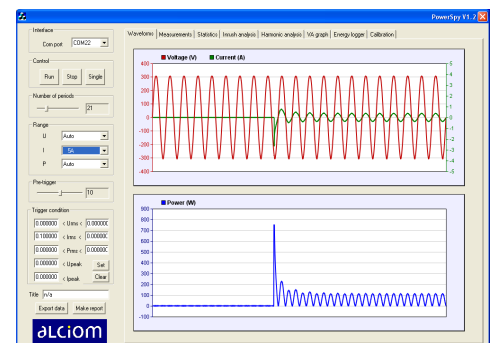


### Multiple-applications !

- **Research and development** : evaluation and optimization of linear and switching power supplies, EMC pre-qualification, precision measurement of in service/sleep mode power consumptions of line-powered equipments
- **Contractors** and users: energy comparison of products, product validation against environmental standards (EuP directives, EnergyStar, etc.)
- **Education** : line measurement with total safety thanks to the Bluetooth galvanic isolation.

### Powerful and open !

- 90 to 240V AC, 1mA to 6A RMS, 10 mW to 1300W, 45 to 65Hz
- 1% precision, reliable measurement of very low powers, 16 bits resolution
- High speed acquisition (256 measurements per period, up to 16.64Ksps)
- Factory or user calibration, possibility to restore the factory calibration data
- **Windows XP/Vista compatible**
- **BlueTooth** link between the Powerspy unit and the supporting PC
- Automatic and configurable **HTML reports generator**, ASCII data export capability



### Available !

- Our distributors : Lextronic (France), The Debug Store (UK), ISS (Sweden, Norway, Finland), Kyhe Ingeneria (Spain)



www.alciom.com - contact@alciom.com  
 5 parvis Robert Schuman - 92370 CHAVILLE - FRANCE  
 RCS NANTERRE B 449 221 613

